



INDOFINE Chemical Company, Inc.

121 Stryker Lane, Bldg. 30, Suite 1 • Hillsborough, NJ 08844 • U.S.A.

Phone: (908) 359-6778 • FAX: (908) 359-1179

website: www.indofinechemical.com

e-mail: chemical@indofinechemical.com

CERTIFICATE OF ANALYSIS

Cat No.: 06-021

Product: NARINGIN DIHYDROCHALCONE

CAS Number: [18916-17-1]

Lot Number: 1207229

Chemical Formula: C₂₇H₃₄O₁₄

Molecular Weight: 582.56

Melting Point: ~126°C (d)

Appearance: Off white powder

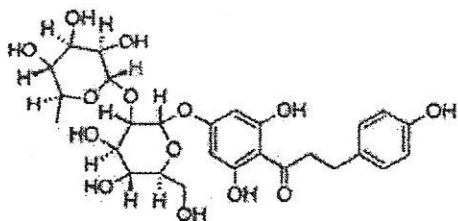
Solubility: Soluble in Chloroform

TLC: Hexane: Ethyl Acetate (7:3)

NMR Spectrum: Enclosed

Storage: Cool dry place

Purity (HPLC): 94.07%





INDOFINE Chemical Company, Inc.

121 Stryker Lane, Bldg. 30, Suite 1 • Hillsborough, NJ 08844 • U.S.A.

Phone: (908) 359-6778 • FAX: (908) 359-1179

website: www.indofinechemical.com

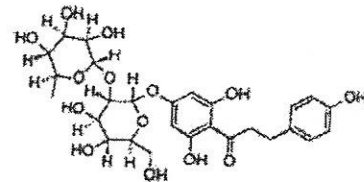
e-mail: chemical@indofinechemical.com

HPLC ANALYSIS

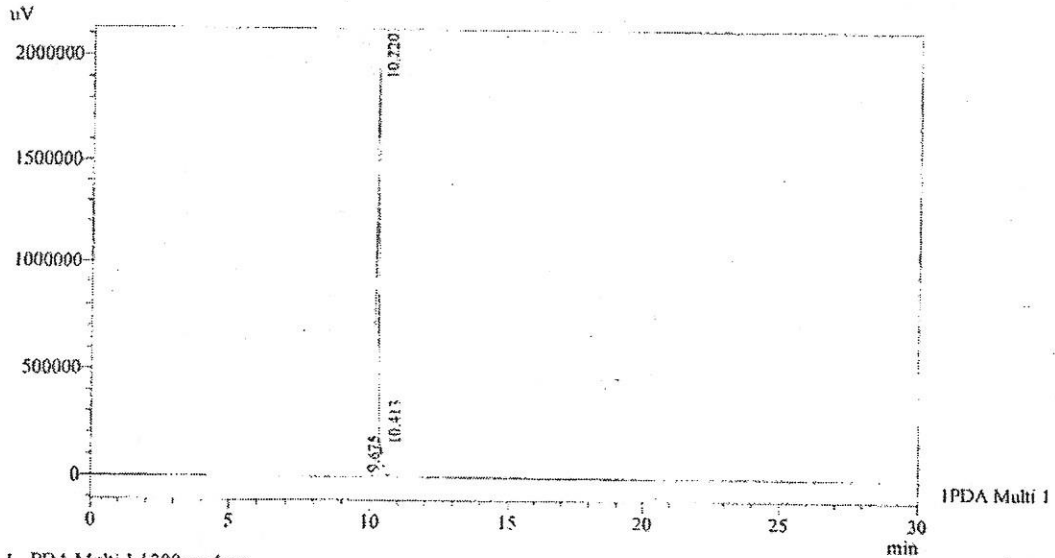
Acquired by : Sanjeev
Sample Name : Naringin Dihydrochalcone
Sample ID : Lot No.-1207229
Injection Volume : 20 uL
Data Filename : 140812D.Jed
Method Filename : Linear Gradient.M.lcm

Catalog no.: 06-021
Product name: Naringin dihydrochalcone
Lot No.: 1207229

Column : LUNA C-18(2), (250mm x4.6mm 5.0µ)
Flow : 1.000 mL/min.
Mobile Phase : A(0.05% TFA in water) B(Acetonitrile)
0.01 90 10
12.0 10 90
20.0 10 90
25.0 90 10
30.0 90 10



Chromatogram



I PDA Multi 1 / 280nm 4nm

PeakTable

PDA Chi 280nm 4nm

Peak#	Name	Ret. Time	Area	Area %	Relative Retention Time
1	RT:9.675	9.675	1801	0.01	0.95
2	Naringin Dihydrochalcone	10.220	12200926	94.07	1.00
3	RT:10.413	10.413	767103	5.91	1.02
Total			12969830	100.00	



INDOFINE Chemical Company, Inc.

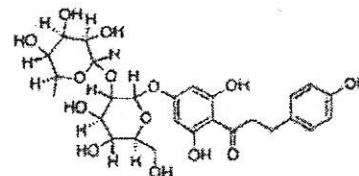
121 Stryker Lane, Bldg. 30, Suite 1 • Hillsborough, NJ 08844 • U.S.A.

Phone: (908) 359-6778 • FAX: (908) 359-1179

website: www.indofinechemical.com

e-mail: chemical@indofinechemical.com

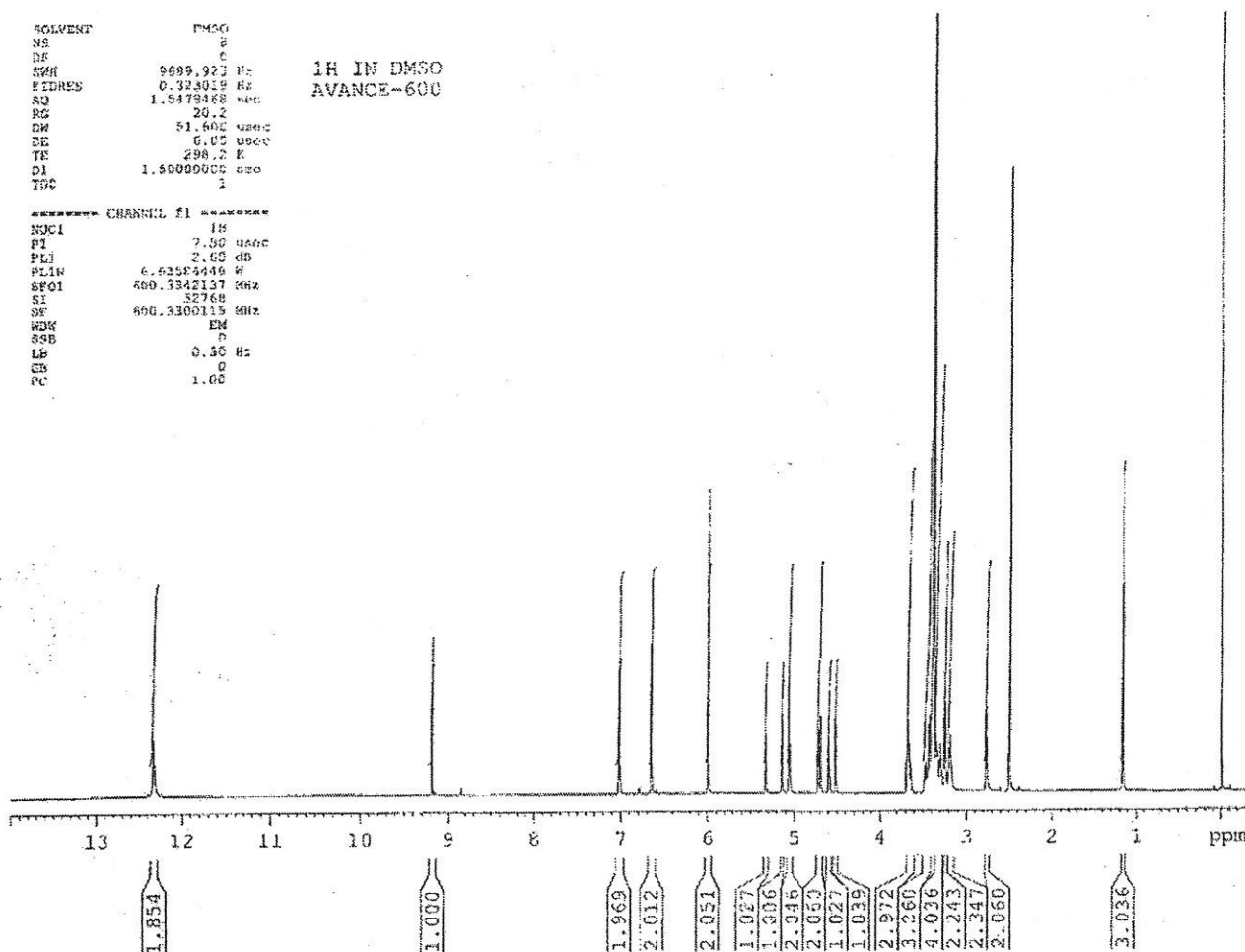
Catalog no.: 06-021
Product name: Naringin dihydrochalcone
Lot No.: 1207229



SOLVENT DMSO
NS 2
DE 0
SWH 9695.923 Hz
FIDRES 0.324019 Hz
AQ 1.5479468 sec
RG 20.2
DW 51.602 usec
DE 6.02 usec
TE 298.2 K
D1 1.5000000 sec
TSC 1

1H IN DMSO
AVANCE-600

***** CHANNEL F1 *****
NUC1 1H
P1 7.00 usec
PL1 2.00 dB
PL1W 6.52554446 W
RF01 400.3342137 MHz
SI 32768
SF 400.3300115 MHz
WBK EM
SGB 0
LB 0.50 Hz
GB 0
PC 1.00





INDOFINE Chemical Company, Inc.

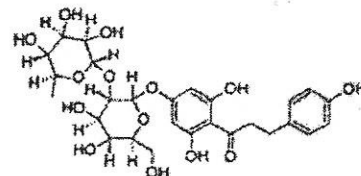
121 Stryker Lane, Bldg. 30, Suite 1 • Hillsborough, NJ 08844 • U.S.A.

Phone: (908) 359-6778 • FAX: (908) 359-1179

website: www.indofinechemical.com

e-mail: chemical@indofinechemical.com

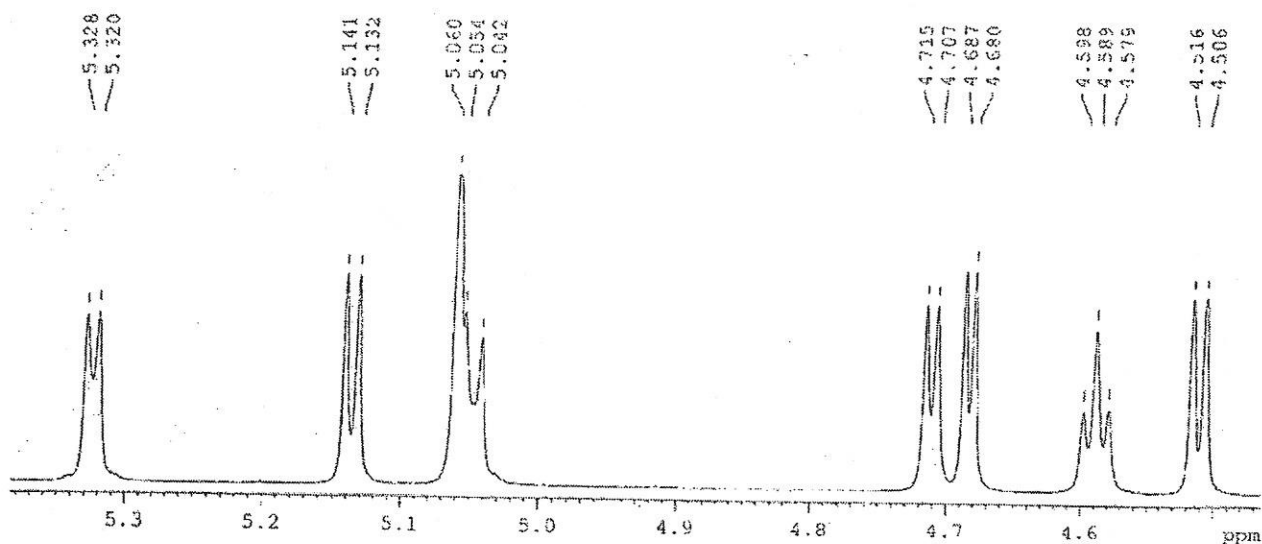
Catalog no.: 06-021
Product name: Naringin dihydrochalcone
Lot No.: 1207229



SOLVENT DMSO
NS 6
DS 0
SWH 5469.323 Hz
FIDRES 0.323013 Hz
AQ 1.5473468 sec
RG 20.2
DR 51.600 usec
DE 5.00 usec
TE 298.2 K
SI 1.50000000 sec
TDC 1

1H IN DMSO
AVANCE-600

----- CHANNEL f1 -----
NUC1 1H
P2 7.50 usec
PL1 2.00 dB
PL19 6.62504448 W
SFO1 600.3322137 MHz
SI 32768
SF 600.3300134 MHz
WDW EM
GB 0
LB 0.30 Hz
GB 0
PC 1.00





INDOFINE Chemical Company, Inc.

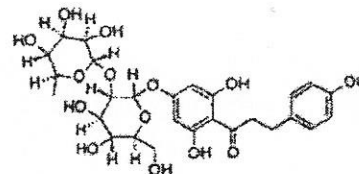
121 Stryker Lane, Bldg. 30, Suite 1 • Hillsborough, NJ 08844 • U.S.A.

Phone: (908) 359-6778 • FAX: (908) 359-1179

website: www.indofinechemical.com

e-mail: chemical@indofinechemical.com

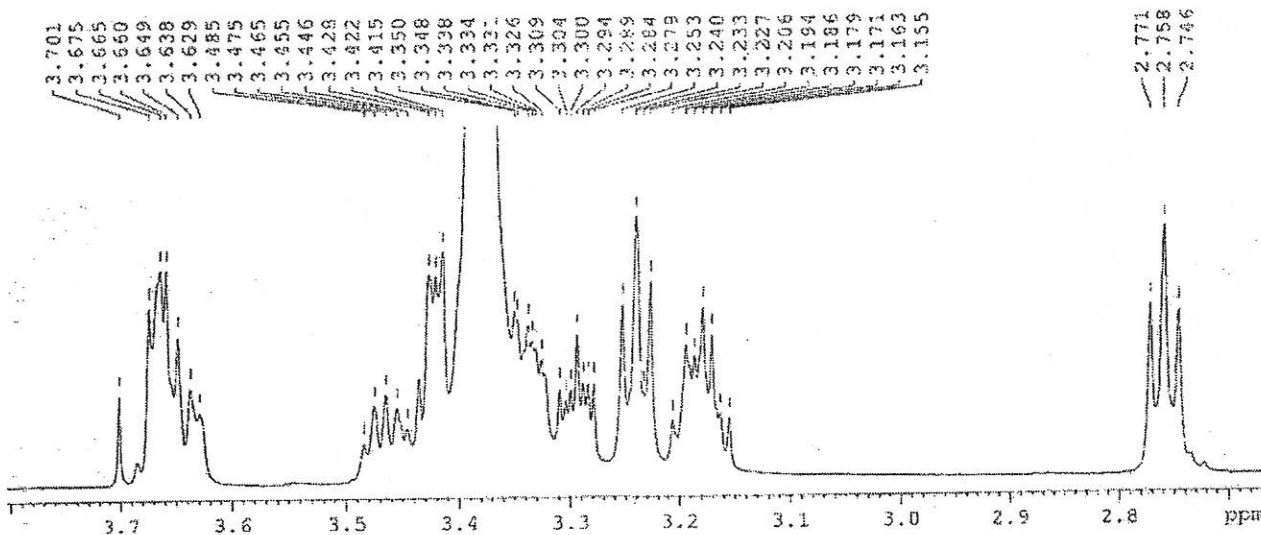
Catalog no.: 06-021
Product name: Naringin dihydrochalcone
Lot No.: 1207229



SOLVENT	DMSO
NS	8
D9	8
JRH	9689.921 Hz
FIDRES	0.323019 Hz
RG	1.3479468 sec
RG	20.2
DN	51.600 usec
DE	2.00 usec
TE	298.2 K
D1	1.5602000 sec
TDC	1

1H IN DMSO
AVANCE-600

CHANNEL F1	1H
NUC1	1H
F1	7.50 usec
PL1	2.00 dB
PL1W	6.42584448 Hz
SFO1	600.13542137 MHz
SI	32768
SW	600.1350173 MHz
HM	EM
SSB	0
LB	0.10 Hz
GB	0
FC	1.00



INDOFINE Chemical Company, Inc.

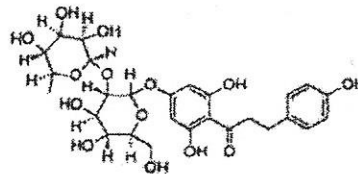
121 Stryker Lane, Bldg. 30, Suite 1 • Hillsborough, NJ 08844 • U.S.A.

Phone: (908) 359-6778 • FAX: (908) 359-1179

website: www.indofinechemical.com

e-mail: chemical@indofinechemical.com

Catalog no.: 06-021
 Product name: Naringin dihydrochalcone
 Lot No.: 1207229



SOLVENT DMSO
 NS 8
 DS 0
 SGR 8488.323 Hz
 FIDRES 0.323819 Hz
 AQ 1.5478468 sec
 RG 20.2
 EN 31.400 HSEC
 DE 6.00 USEC
 TE 298.2 F
 FI 1.5000000 sec
 TDC 1

1H IN DMSO
 AVANCE-600

----- CHANNEL 21 -----
 NUCL 1H
 P1 7.30 usec
 PL1 2.60 dB
 FLOW 6.62564448 W
 SFO1 600.3342137 MHz
 SI 32768
 SF 600.3305112 MHz
 NSM 0
 SSB 0
 LR 0.30 Hz
 OB 0
 PC 1.00

